



ABC USERS SUMMIT

HEALTH CARE • INDUSTRIAL

THE RITZ-CARLTON, DALLAS | MAY 12-14, 2021

RESOURCE GUIDE
2021



Health Care



Industrial



Better Together

At Bradley, we combine experience and knowledge with a sophisticated understanding of our construction clients' unique and complex legal needs. From initial contract negotiation and bid preparation to project close-out and dispute resolution, our clients rely on us to provide innovative solutions, dependable responsiveness and a deep commitment to success. We strive to go **above** and **beyond** expectations to help clients meet their goals.

Named the "2020 Construction Group of the Year" by Law360

Named the nation's "Law Firm of the Year" for Construction Law in U.S. News & World Report — Best Lawyers "Best Law Firms" for 2018 & 2020



Bradley

Bradley Arant Boult Cummings LLP

No representation is made that the quality of the legal services to be performed is greater than the quality of legal services performed by other lawyers. ATTORNEY ADVERTISING. Contact: John D. Watson, Esq., 205.521.8436, jwatson@bradley.com, Bradley Arant Boult Cummings LLP, 1819 Fifth Avenue North, Birmingham, AL 35203. ©2021

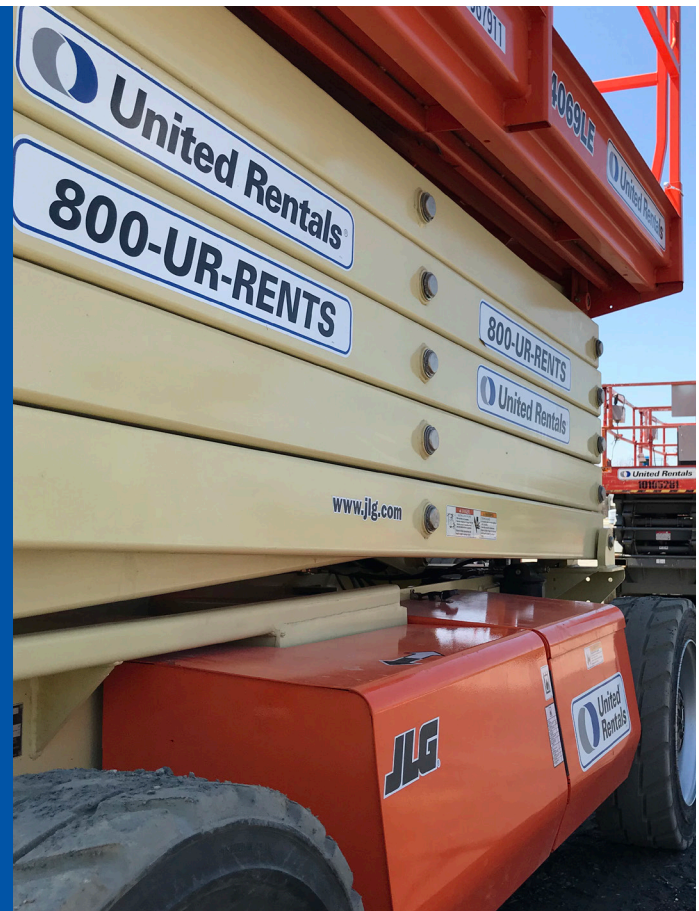
 **United Rentals®**

Equipment, wherever and whenever you need it.

With the largest, most diverse fleet of construction and industrial equipment in North America, we are a one-stop shop for whatever you need, delivered on time and ready to go.

UnitedRentals.com | 800.UR.RENTS

© 2021 United Rentals, Inc.



Welcome to the eighth annual ABC Users Summit!



After taking a “pandemic pause” in 2020, we are excited to bring the ABC Users Summit back to Dallas in 2021.

In fact, our time apart and the pandemic experience will only add to the texture of the conversations we will have this week. We have all been forced to be more creative, innovative and flexible to

keep construction moving forward safely and productively.

This year’s summit will have a slightly different flavor as attendees share what has worked and what has not, as well as how both users and contractors have adapted for today and tomorrow.

At the center of all the discussions is the importance of collaboration and communication, and how we, as owners and contractors, can all be better together.

I would like to recognize the members of the Industrial and Health Care steering committees for their leadership, our event sponsors for their financial support and the presenters and moderators for sharing their time and talent.

During the summit, you will notice a few format and program changes designed with safety protocols at the forefront.

Masks will be required during our sessions and attendees will be subject to daily temperature checks. If at any point you have any concerns, please reach out to me or any ABC National staff member for assistance.

I am looking forward to another great summit and appreciate each of you contributing to the success of our conversations.

Sincerely,

Kevin Sell

CVO

United Group Services

ABC Users Summit Chair

ABC Users Summit Chair

Kevin Sell, *United Group Services*

HEALTH CARE STEERING COMMITTEE

Chair: David Pugh, *Bradley, Arant, Boult Cummings LLP*

Jack Darnall, *Lemoine Program Services*

Danny Gibson, *MetroPower*

Graham Howard, *ADAMS Management*

Katie Leonard, *Wellstar Health System*

Joe Powell, *National Institute for Healthcare Infrastructure*

Darrell Simpson, *The Sanders Trust*

INDUSTRIAL STEERING COMMITTEE

Co-chair: Kevin Sell, *United Group Services*

Co-chair: Ryan Odendahl, *Kwest Group*

Joe Clements, *LGE & KU*

Pete Dumont, *PraireDog*

Tim Keating, *R.C. Stevens*

Ed Luckenbach, *Air Products and Chemicals*

Brian Stamper, *Advantic LLC*

WIFI INFO

SSID: RitzCarlton_Conference

Password: ABC2021

EVACUATION PROCEDURES

In the event of fire or other emergency, attendees will be directed to the nearest emergency exit by hotel staff. Once outside the building, hotel staff will direct attendees to an emergency evacuation center.

There are emergency exits in all meeting space areas that are marked with green EXIT signs at the ceiling level. Once outside the building, follow directions to the emergency evacuation center as provided by hotel staff along the route.

MEDICAL OR EMERGENCY PROCEDURES

All Ritz-Carlton, Dallas loss prevention staff are certified in adult/child CPR, basic first aid and in use of an automatic external defibrillator. The Loss Prevention staff have also received training on how to manage emergency situations. Automatic external defibrillators are located at the front desk, fitness center and prevention dispatch center. In case of an immediate emergency, dial 66 on any house phone. For non-emergencies, dial 4767.

The director of loss prevention can be reached at 469-590-5300 (cell) or 4766 from any house phone. Email the director at: jose.candanozajr@ritzcarlton.com.

If you are exhibiting COVID-19 symptoms at the hotel, you must go to the hospital to be tested. If the test is positive, you must go home. The hotel will need to know your movements while at the hotel to track who else may have been exposed and what areas to clean.



BE THE BUILD WITH THE BEST

Join an elite group
of contractors!

abc.org/aqc

When you choose to work with an **ACCREDITED QUALITY CONTRACTOR (AQC)**, you choose to work with the best of Associated Builders and Contractors' more than 21,000 member firms.

The AQC designation provides national recognition to construction firms that demonstrate their commitment to corporate responsibility in quality, safety, craft and management education, talent management and diversity, and community relations.



In 2020, Tradesmen Craft Professionals worked 15.5 Million Man-Hours – They Emphasized Safety *One Minute at a Time.*

Since 1992, we've focused on providing industrial and commercial contractors proven trades who emphasize Safety, Productivity and Craftsmanship.

We have more than 200 recruiters in 181 markets. Our high-tech National Recruiting Center can – with the push of a button – convert these recruiters into a single, powerful recruiting engine *focused on staffing your project.*

Whether a refinery, data center, medical campus or multi-acre solar farm, we can efficiently mobilize one to hundreds of experienced trades who meet your exact trade specs, precisely when and where you need them.

Call Our Strategic Accounts Team for Info: 866.399.3789



tradesmeninternational.com



Sessions

All sessions take place in the Salon Ballroom.

Wednesday, May 12, 2021

5 - 6 p.m.

Meet and Greet

Sponsored by



6 p.m.

Dinner on Own

Please feel free to contact us anytime.

Lindsay Gold
Director of
Meetings and
Events
gold@abc.org
(703) 300-3866

Sandy Lynch
Vice President,
Public Affairs and
Member Services
lynch@abc.org
(202) 380-8827

Thursday, May 13, 2021

9:30 a.m. - 5 p.m.

Registration Open

10:30 a.m. - 12 p.m.

General Session

Project Summit: Project Success Through Trust and Collaboration

Using the principals highlighted at recent ABC Users Summits, a panel will discuss a collaborative model designed to drive risk out and to employ a fully pre-planned, leading indicator construction methodology. Every action is thoughtfully prepared and challenged prior to execution to ensure necessity, correctness and readiness. Actions are founded in the value to the project rather than the benefit of a single participant.

Moderator: Dr. Kenneth Sullivan, associate professor, School of Sustainable Engineering and the Built Environment, Arizona State University

Panelists: Dan McKechnie, Air Products and Chemicals; Ryan Odendahl, Kwest Group; Kevin Sell, United Group Services; Todd Stevens, MetroPower

12 - 12:30 p.m.

Lunch

12:30 - 1:45 p.m.

General Session

Anirban Basu and the Chamber of Data

ABC's chief economist Anirban Basu presents economic data and analysis juxtaposing the pre- and post-pandemic world, as well as a forecast for the post-pandemic era. Areas of focus include: labor markets, financial markets, real estate, construction, consumer spending, business investment, international trade and government finances.

Speaker: Anirban Basu, chief economist, ABC National

1:45 - 2:15 p.m.

Break

2:15 - 3:30 p.m.

Industrial Breakout

New Approaches to Industrial Design

Learn new, innovative design practices in the light and heavy industrial space, including flexible facilities, standard and customized modular design, and process intensification/miniaturization. Engage in conversations about new research, case studies and how to maximize outcomes by utilizing innovative approaches.

Moderator: Brian Stamper, managing partner, Advantic LLC

Panelists: Jaime Johnston, Bryden Wood; Patrick Mays, Dassault Systemes

Health Care Breakout

Construction Professionals and the Healthcare C-Suite: Strategies to Enhance Project Collaboration

A collaborative, productive relationship between building professionals and health care system leaders has never been more essential, especially with the looming pandemic. Each speaks a different language and often sees the built environment from divergent views. This panel will discuss how to effectively influence C-suite thinking to create a common language and shared goals.

Moderator: Joe M. Powell, chairman, University Research Institute

Panelists: Jeff Christmann, ADAMS Management Services, Inc.; Michelle Mader, MBA, MHA, Ankura; Scott Nelson, AIA, ACHA, Advocate Healthcare



“ Our healthcare projects are very complex, and there are very few contractors I would trust to perform this type of work. MetroPower embraces our projects with a commitment of quality and care and a level of professionalism that is above expectations. ”

— Grant Osburn, Director of Projects
at ECHO Power Engineering



EMR 0.57



229.432.7345

www.metropower.com

BUILDING TRUST, FROM THE GROUND UP.

CIVIL CONSTRUCTION AND ENVIRONMENTAL SERVICES

Backed by over 3 million work hours without a lost time incident, Kwest Group is proud to be one of the safest contractors in the country.



PERRYSBURG, OH / DUBLIN, OH / ROCKWALL, TX
419-874-4284 / 614-734-4664 / 972-722-3874



SERVICES PROVIDED BY KWEST GROUP:

- Access Roads (Aggregate, Timber Mats, and Paved)
- Erosion Controls/SWPPP (Design, Install, Inspect, and Maintain)
- Earthwork and Site Grading
- Clearing and ROW Maintenance
- Wetland Protection, Mitigation, and Restoration
- Underground Utilities
- Site and Structural Concrete
- Slide/Slope Stabilization and Shoreline Protection
- Road and Airfield Construction
- Rail Siding/Intermodal
- Site Demolition
- Cathodic Protection

Thursday, May 13, 2021 (Continued)

3:30 - 3:45 p.m.

General Session

3:45 - 5 p.m.

Industrial Breakout

The Future of Integrated Project Delivery: Taking IPD to the Next Level

Capital projects are a significant part of the U.S. economy, resulting in approximately \$1.3 trillion worth of construction each year, and performance issues in the industry are still common. Projects are exceedingly inefficient, riddled with high transaction costs attributed to friction in data exchanges and contractual relationships, with approximately 40% of spending attributed to non-value-added transactional costs. Furthermore, each participant in the many layers of project hierarchies contributes to increasing administrative drag that escalates the cost of capital. Integrated Project Delivery attempts to solve some of these problems, but we can do more. Learn how the Operating System 2.0 (OS2) initiative is expanding core IPD principles in two additional dimensions, leading to a true shared success business model for all parties involved in capital projects.

Moderator: Kelcey Henderson, President, Continuum Advisory Group

Panelists: Randy Abdallah, Wallbridge; Pete Dumont, PrairieDog; Charlie Dunn, DPR; Jim Ellis, Microsoft; Bill Van Sweringen, ExxonMobil

Health Care Breakout

Health Care Construction Pre-fabrication Strategies and Their Impact on Design, Construction, and Occupancy

With the pandemic accelerating project timelines, the relationship between manufacturing and construction is growing more robust—and each has a great deal to learn from the other. This panel will discuss the latest advancements, what's working and what's not.

Moderator: David Pugh, partner, Bradley

Panelists: Matt Abeles, ABC National; Sara Curry, JE Dunn; Michelle Mader, MBA, MHA, Ankura; Katie Wells, Brasfield & Gorrie

6:15 - 7 p.m.

Cocktail Reception

7:15 - 9 p.m.

Dinner

The Ocaso/The Sendero

Sponsored by



Friday, May 14, 2021

7 - 7:45 a.m.

General Session — Breakfast Program

Leveraging Relationships and Trust to Tackle Pandemic Challenges

During the past year, construction users and contractors have adopted and implemented new strategies to continue to educate, engage and deploy a productive workforce while keeping employees healthy in a challenging pandemic environment. Unlike ever before, users and contractors relied on collaboration to achieve successful outcomes. Panelists will discuss the use of innovative workforce strategies and tools as well as share information about the latest recruitment and retention efforts.

Moderator: Greg Sizemore, vice president, HSE and workforce development, ABC National

Panelists: Ed Luckenbach, Air Products and Chemicals; Ryan Odendahl, Kwest Group; Kevin Sell, United Group Services

7:45 - 8 a.m.

Break

8 - 9:15 a.m.

General Session

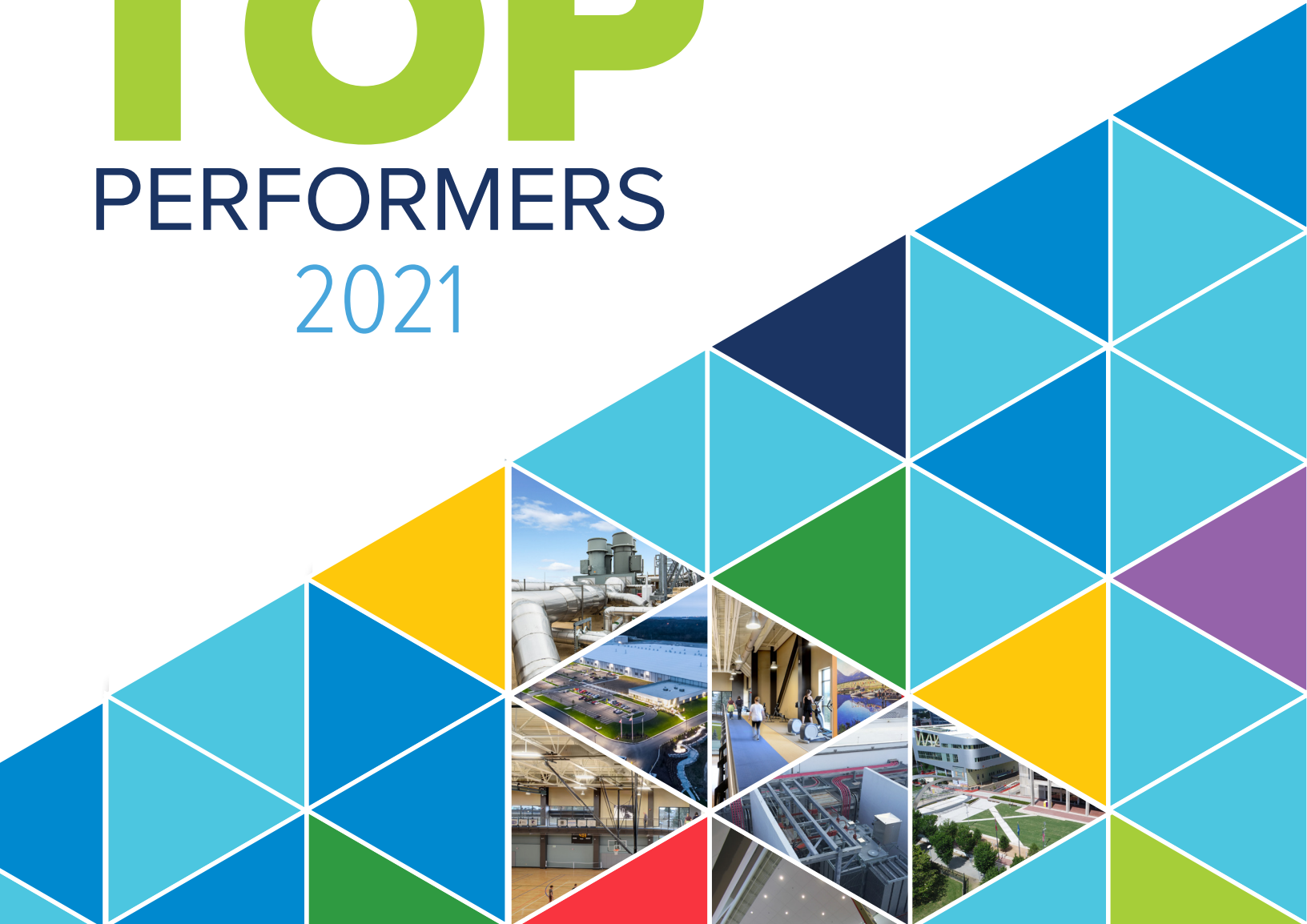
Customer of Choice

Are you a customer of choice? Are your contractors and designers sending you their best teams? Are you receiving high-quality construction and engineering services? Are you seeing different firms pursuing your projects, or is it usually the same group over and over? This session will review research findings on the key attributes of a customer of choice and how being a good client drives down costs and increases performance.

Presenter: Dr. Kenneth Sullivan, associate professor, School of Sustainable Engineering and the Built Environment, Arizona State University

Panelist: Ed Luckenbach, Air Products and Chemicals

ABC'S **TOP** PERFORMERS 2021



Congratulations to ABC's Top Performers of 2021

What defines the best of the best? Associated Builders and Contractors' 2021 Top Performers lists—the only rankings of their kind—recognize member contractors' achievements in safety, quality, diversity, project excellence and special designations, ranked by work hours. All Top Performers must demonstrate world-class safety performance by achieving Gold status or higher in ABC's STEP Safety Management System in 2020.

Visit abc.org/topperformers today to see the full list.



Save the Date



March 15-17, 2022
abccconvention.abc.org



**BRASFIELD
& GORRIE**
GENERAL CONTRACTORS

brasfieldgorrie.com

We believe

in acting with integrity, honoring our commitments, improving continually, and providing the kind of service that makes our clients glad they did business with us.



United Group Services is a team of highly skilled professionals specializing in the delivery of successful construction projects. We are known for our Core Values: Safety, Quality, and Service....not limited by borders or boundaries.

united-gs.com



UNITED
GROUP SERVICES

Speakers



As executive vice president of Walbridge, **Randy Abdallah** is tasked with securing about \$1.9 billion in sales commitments every year. Under his

leadership, Walbridge has opened offices in South America and the Middle East. Abdallah is a graduate of the construction engineering technology program at Fanshawe College in Canada and the Macomb School of Business executive training program at the University of Texas.



Matt Abeles, ABC's vice president for construction technology and innovation, has advised and raised capital for many construction

technology companies. In 2014, Abeles co-founded BuiltWorlds, a media company and digital network for the building industry which hosts global events and produces industry research. He was responsible for outreach to players in construction developing next-generation technologies as well as talking to influential audiences about the future of construction.



Anirban Basu is chairman and CEO of Sage Policy Group Inc., an economic and policy consulting firm in Baltimore. The firm provides

strategic analytical services to energy suppliers, law firms, medical systems, government agencies and real estate developers, among others. Basu is also ABC's chief economist and chief economic advisor to the Construction Financial Management Association, chair of the Maryland Economic Development Commission and lectures at Johns Hopkins University.



Sara Curry brings 15 years of experience leading, planning and delivering a variety of complex healthcare construction projects. In her role as JE

Dunn Construction's healthcare VDC director, she leverages her education in architecture and business, plus her technical skills, highly collaborative approach, and drive for results and innovation. She serves as a key leader in planning projects with heavy prefabrication plans to improve quality, collaboration and speed to market for her clients and partners.



Charlie Dunn, project storyteller at DPR, thrives in the challenging delivery gap between "as is" conditions and the "to be" designed state.

He has delivered over 2.5 million square feet of new distribution space with zero recordable injuries. Dunn believes that a team focused on the values of safety and productivity and integrating input from all trades will excel in every other measure.



Peter Dumont is the CEO of PrairieDog and executive advisor for the Premier Resources Group. With over 25 years of domestic and international

engineering and construction experience, he has worked in all phases of delivery from early planning through detailed engineering, procurement, construction and maintenance on assets up to \$30 billion in capital cost and is currently the site construction manager and director of business services for LyondellBasell on a \$2.5 billion greenfield/brownfield petrochemical project in Channelview, Texas.



As Microsoft's corporate vice president of data center construction, **Jim Ellis** develops and implements key strategies to ensure safe and efficient

construction delivery worldwide. Ellis has 40 years of experience with Dupont and SABIC in senior global leadership roles including engineering and project management, corporate operations, manufacturing, technology, JV Operations and M&A, and supply chain. He is president of the Construction Users Roundtable.



Jaimie Johnston joined Bryden Wood – technologists, designers, architects, engineers and analysts – in 1995 and is now the board director and

head of global systems. An authority on industrialized construction, he works with clients in the U.K., United States, Europe and Asia. Johnson has written benchmark strategy documents now adopted as a foundation for the U.K. government's drive to create a more productive, value-driven construction sector.




Kelcey Henderson is a founding member and president of Continuum Advisory Group, a management consulting firm to the building and construction

industry. She works with organizations throughout the industry value chain, specializing in strategic planning and the development of lean and integrated teams. Henderson is a regular speaker for industry associations and also leads research on the topics of innovation, integration, project excellence and the strategic role of E/C/F in achieving key business objectives.

The logo for Taft, featuring the word "Taft" in a black serif font followed by a red diagonal slash.

Taft/

A background image of a city skyline at dusk or dawn, with buildings and a bridge reflected in water.

Lawyers with one mission:
to advance yours.

Discover the modern law firm.

Taftlaw.com

A background image of a map of the United States with several red location pins. A yellow callout box is positioned over the map.

**FIND AND DO BUSINESS
WITH OTHER ABC MEMBERS.**

FindContractors.com lets you search for members by name, chapter, location, sales volume or type of construction, plus it's easy to find members that participate in STEP, have federal designations and have signed the Drug- and Alcohol-Free Workplace Pledge. You can also update your membership information—and win more work!

Check out **FindContractors.com** today.



Speakers



Ed Luckenbach

is the manager for Air Products and Chemicals' Americas field execution team, overseeing construction and commissioning.

Luckenbach has 30-plus years with Air Products in industrial gas plant engineering, design and construction. His career includes mechanical engineering of systems, large machinery engineering and commissioning and more than 15 years starting up industrial plants. His passion is site safety, leadership and making the contractor workforce successful.



Michelle Mader, MBA, MHA,

managing director of Ankura, combines a passion for health care with a talent for strategic thinking, empowering clients

to navigate complex, fast-paced challenges. She is an effective leader who inspires innovation, creative solutions and the delivery of concrete results. Her experience over the last 20 years includes identifying growth opportunities and cultivating alignment within large, transformational health care systems.



Patrick Mays

is a registered architect with over 40 years of experience in design and construction.

He has led design technologies at BAR, HOK and

NBBJ, and at Herman Miller, where he helped develop manufactured building systems. Mays is the author of Construction Administration, published by John Wiley & Sons, and Information Management and Contract Administration in the American Institute of Architects Handbook of Practice.



Dan McKechnie

has served as a senior project manager for over 20 years with Air Products, executing projects for air separations, HYCO, electronic specialty

chemicals and performance materials. This work has been done across North

America and in multiple countries in Asia. McKechnie has a degree in chemical engineering and an MBA with a project management concentration.



Scott Nelson

has spent 36 years working in the planning, design and construction of health care facilities. Five years ago, he took the reins at Advocate

Aurora Health as system vice president for planning, design and construction, responsible for managing forward-focused projects for 28 hospitals and over 500 additional care sites. His team manages over \$3 billion of capital projects in two states.



Ryan Odendahl

is the president of Kwest Group, an employee-owned, merit shop civil construction firm serving the energy, rail, industrial, petrochemical,

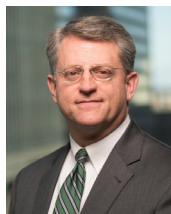
defense and infrastructure markets. Kwest has achieved 3.3 million man hours without a lost time incident and has been awarded seven ABC National Safety Pinnacle Awards. Ryan served in the Marine Corps, has a BS in safety and environmental management and an MBA. An avid outdoorsman, he is also active with the scouting program.



Joe M. Powell

is the executive director of the Institute for Healthcare Infrastructure Research, a program of the University Research Institute

in Washington, D.C. A registered architect with a master's degree in architecture, he has spent his 40-year career researching the relationship between corporate strategy, human behavior and the built environment. He is the author of The New Competitiveness in Design & Construction.



J. David Pugh

is a partner in the Birmingham, Alabama, office of Bradley Arant Boult Cummings LLP, where he is part of the firm's construction law

practice group. He advises contractors, subcontractors, owners and developers on the development, design and construction process. Pugh holds a bachelor's degree in civil engineering from the University of Alabama and worked as a project engineer before earning his law degree from Vanderbilt University Law School.



Kevin Sell

is the CVO of United Group Services, a Cincinnati industrial construction firm that works throughout the country. He also provides corporate oversight

for Elite Welding Academy, Core Crew, PMS and Innovative Mechanical Services. Sell has technical degrees in fire science and business administration, a BA in safety engineering and a master's in construction management. Sell also serves as a DOL Special Government Employee.



Greg Sizemore

is ABC's vice president of health, safety, environment and workforce development. He oversees a network of education

programs and leads ABC's health, safety, environment and workforce development initiatives. Sizemore is past chair of the ABC National Craft Champions Committee and NCCER Workforce Development Committee, serves on the board of directors of NCCER and is chair of the Construction Industry Alliance for Suicide Prevention.



Brian Stamper

as the chief revenue officer for Advantic LLC, a turnkey structural composite company, responsible for client relationships and managing all

revenue streams. Prior to working at Advantic, Stamper worked at United Group Services, leading its business development efforts, and at the Construction Users Roundtable and Construction Labor Market Analyzer where he helped owners understand the critical issues needing to be addressed.

Speakers



Todd Stevens has over 30 years in the construction industry, joining MetroPower in 2018 as vice president of industrial construction.

Stevens is a leader in the areas of quality control process establishment and employee skill development that result in high performance teams. He has proven agile when adapting to the industry's fast-paced changing requirements. His comprehensive experience includes design, construction, operations and business management.



Dr. Kenneth Sullivan is a professor in the School of Sustainable Engineering and the Built Environment at Arizona State University, teaching

advances in construction delivery and innovation. He specializes in construction delivery approaches, best value procurement, performance and risk measurement and organizational transformation. He has helped Fortune 500 companies and public organizations transform their construction services, including the city of Los Angeles, Google and Georgia-Pacific.



Bill Van Sweringen has been a contractor and owner project manager in the international design and construction of oil and gas projects for 46 years. For the

last three years he has been exploring technology and innovation to solve difficult project execution issues, and is a digital strategy advisor for ExxonMobil Global Projects Company.

He has an MBA in finance from New York University.



As director of lean construction at Brasfield & Gorrie, **Katie Wells** employs lean practices in the company's operations and preconstruction processes by

encouraging continuous improvement, removal of waste, identification of customer-defined values and collaboration among teams. She has also worked on more than \$350 million worth of projects for the company's commercial and healthcare divisions. Katie's experience with lean construction and integrated project delivery includes seven projects worth more than \$60 million.

The graphic features a glowing blue DNA double helix structure on the left side, set against a dark blue background with faint architectural drawings. The DNA helix is composed of glowing blue lines and dots. To the right of the helix, the text 'Leadership Commitment', 'Cultural Transformation', 'Process and Systems', and 'Results' is arranged vertically, with lines connecting them to the DNA structure. In the top right corner, the ABC STEP logo is displayed, with 'ABC' in a stylized font and 'STEP' in a bold, sans-serif font, followed by 'Associated Builders and Contractors' in a smaller font. The main text on the right reads 'Make SAFETY a part of your company's DNA', with 'SAFETY' and 'DNA' in large, bold, green letters. At the bottom right, it says 'Start your safety journey today. Visit abc.org/step.' in white text.

Leadership Commitment

Cultural Transformation

Process and Systems

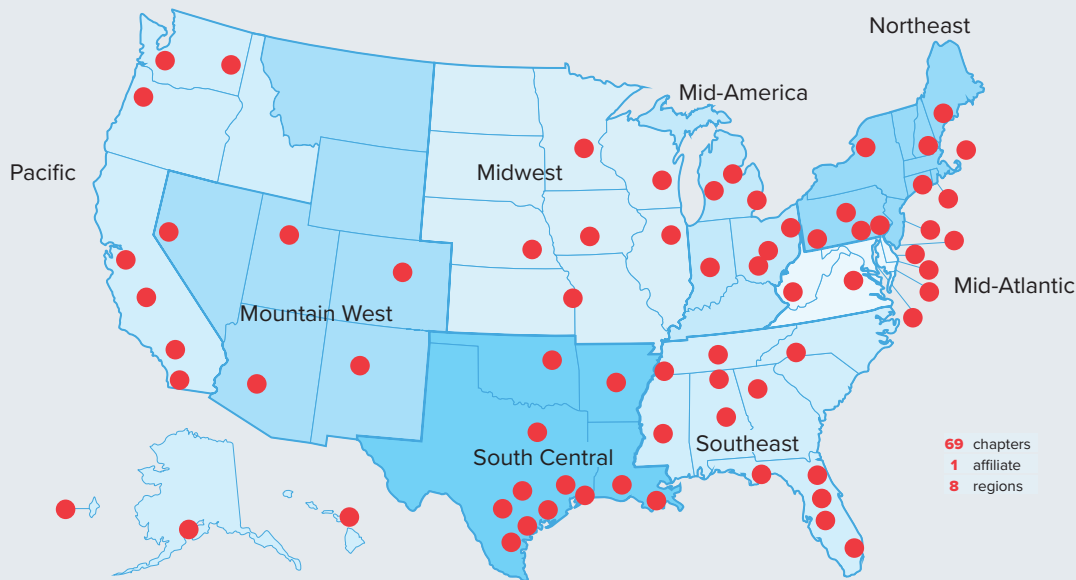
Results

ABC STEP
Associated Builders and Contractors

Make
SAFETY
a part of your
company's
DNA

Start your safety journey today. Visit abc.org/step.

Find an ABC Chapter



ABC and its 69 chapters have **800+ apprenticeship and training programs** around the country to promote careers in construction, address the skilled worker shortage and improve skills, productivity and career advancement. Find your local ABC chapter for details.

abc.org/chapterlocator

Outreach initiatives include student chapters at colleges and universities, scholarship programs and relationships with education and training organizations.

workforce.abc.org

Attendees (as of April 28)

ADAMS Management Services

Advantic

Advocate Aurora Health

Air Products and Chemicals, Inc.

Alpha Insulation & Waterproofing Inc.

Ankura

Ardent Services

Arizona State University

Bear General Contractors

Blackline

Bradley Arant Boult Cummings LLP

Brasfield & Gorrie

Bryden Wood Technology Ltd.

Building & Earth Sciences

Cajun Industries, LLC

CBRE

CIANBRO

Clark Construction Group, LLC

Comfort Systems USA
Southeast

Construction Contracting
Services Inc.

Continuum Advisory Group

Dassault Systemes

Development Solutions

Diversified Label

DPR Construction

Entergy

ExxonMobil Global Projects Company

Falkenberg Construction

Gaylor Electric, Inc.

Gilbane Building Company

GROUP Industries, LLC

Haley-Greer, Inc.

Haskell

Healthcare Technical Services, Inc.

Hoar Construction

Holes Incorporated

Industrial Construction &
Engineering, Co.

JE Dunn Construction

Keller Inc.

Kwest Group, LLC

Lemoine Program Services

LG&E and KU Services

LifePoint Health

MAREK

MetroPower, Inc.

Microsoft

MW Builders

National Roofing Partners

NCCER

OilDri Corporation of America

Osorno Group Corp.

Poole Anderson Construction

PrairieDog

Prism Electric Inc.

Procter & Gamble

PRSC Group

R. C. Stevens Construction Co.

Rabren General Contractors

RA-LIN

Robins & Morton

Rogers-O'Brien Construction

SEDALCO, INC.

Simplar

Skiles Group LLC

Taft Stettinius Hollister LLP

The Sanders Trust

Thompson Engineering, Inc.

Tradesmen International

Tri-City Electrical Contractors, Inc.

Turner Construction

United Group Services

United Rentals

University Research Institute

Walbridge



ABC USERS SUMMIT

HEALTH CARE • INDUSTRIAL

Thank You to Our Sponsors



If you are interested in securing your sponsorship for the 2022 ABC Users Summit, reach out to Jaclyn White at white@abc.org for more information.